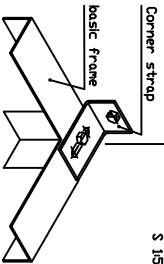


FOR U.S. INSTALLATION ONLY.

Detail Y

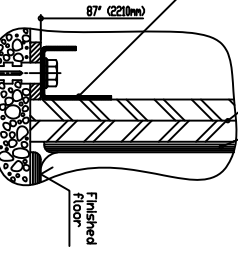
Fastening of the basic frame above S 15
Corner strap



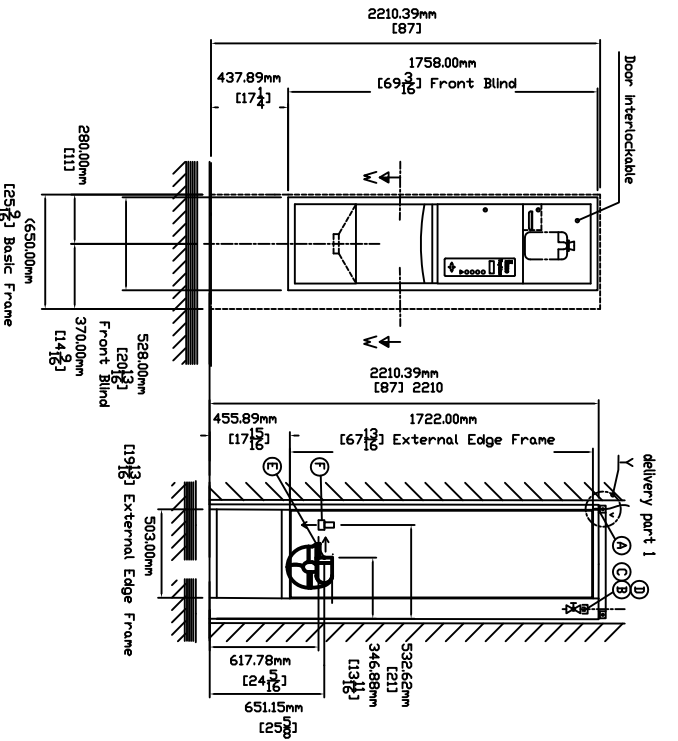
Note: See DPA-2522-10

Detail Z

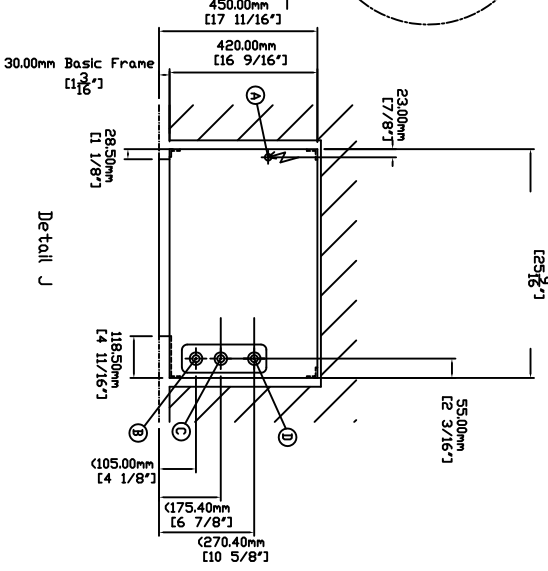
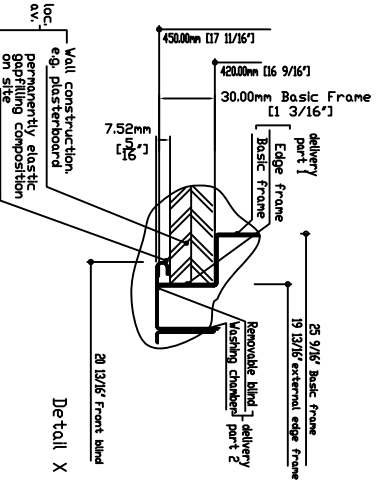
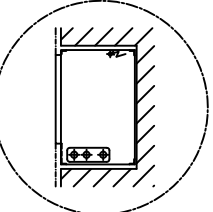
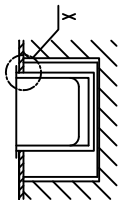
Fastening of the basic frame on the wash floor



Note: See DPA-2522-10
Weight of unit 80 kg - 66 lbs.
Weight of unit 110 kg - 176 lbs.
Total weight 110 kg - 242 lbs.
In the building



Section W-W



| | |
|-----------------------------------|--------------------|
| Sanitary Installation | MEIKO |
| B Cold Water | R 1/2" NPT - Stop |
| C Hot Water | R 1/2" NPT - Stop |
| D Low pressure steam | R 1/2" NPT - Stop |
| E Waste Drain | 3" Trap |
| F Vents | 2" Trap |
| Electrical Installation | 2" Vent Connection |
| A 11 Grnd - 208/230V, 60Hz, 0.8KV | |

MEIKO USA INC.
1349 Hill Quaker Blvd. LaVerne TN 37086
UNITED STATES OF AMERICA
TEL: (615)399-6500 FAX: (615)399-6600

| | |
|-------------|--|
| Reference | TOP LINE 30 DI - NDD RH |
| Project no. | Thermal disinfection/External Steam Supply |
| Drawing no. | Checked |
| Scale | 1:20 |
| Drawer | db |
| Date | May 10, 2011 |
| Checked | db |
| Date | May 10, 2011 |
| Index | |