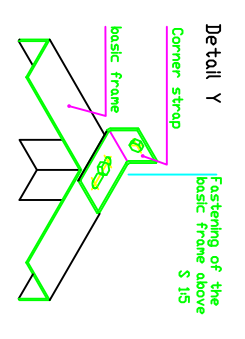
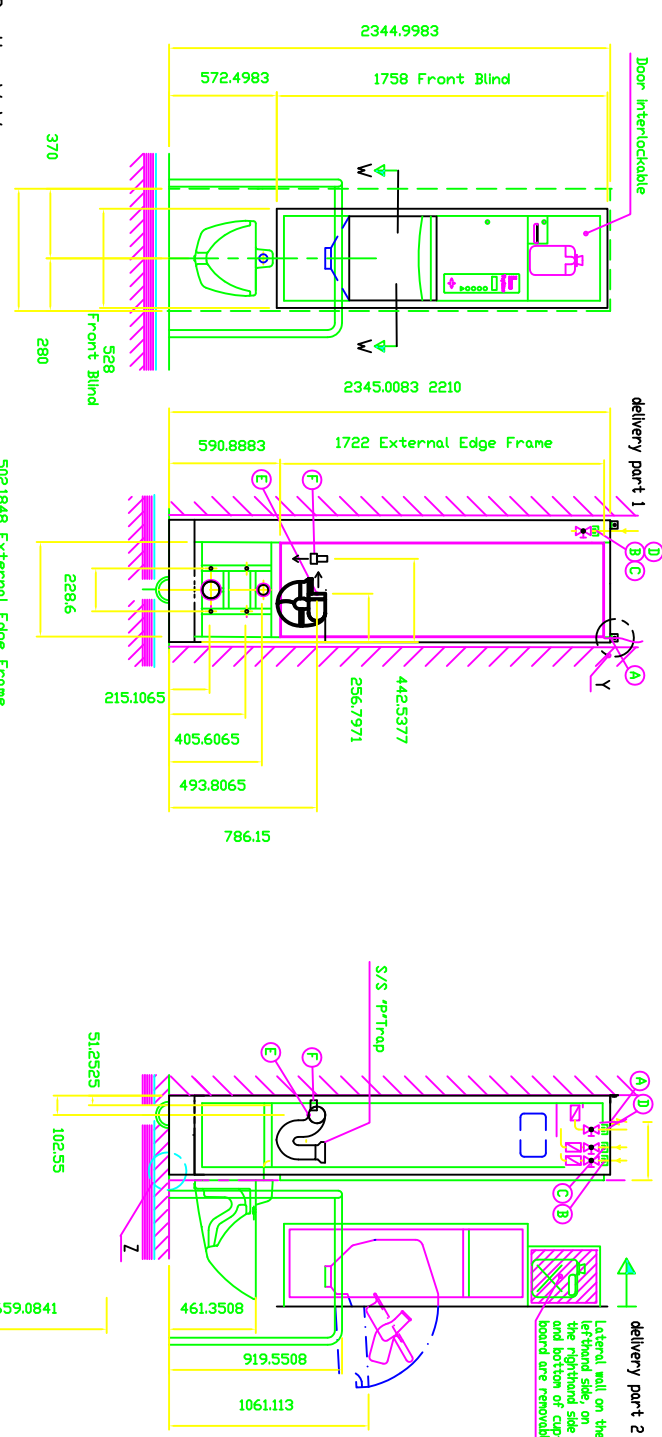
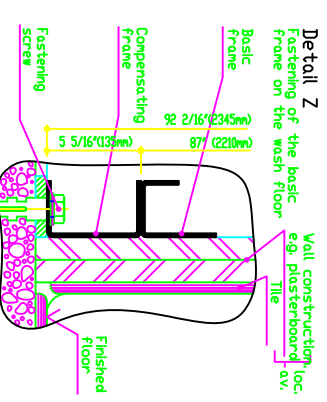


FOR US INSTALLATION ONLY.

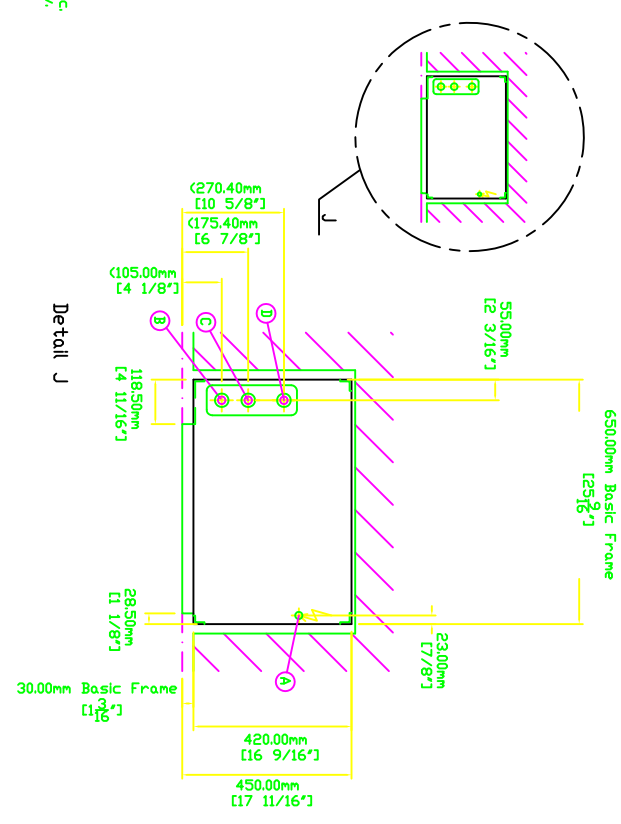
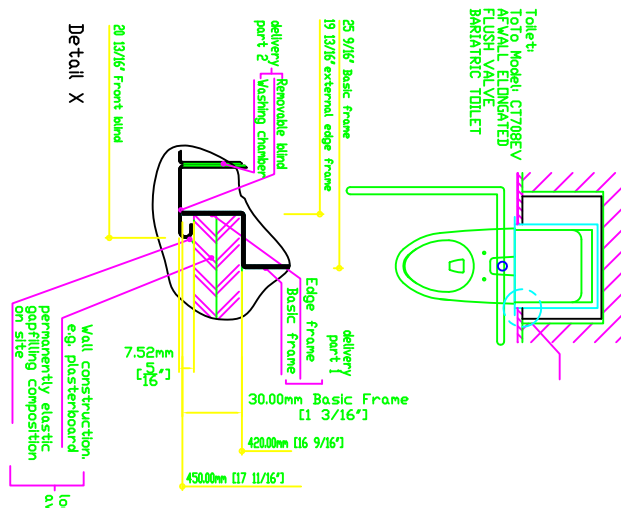


Note See DPA-2522-10



Note: See DPA-2522-10  
 Weight of frame 30 kg - 66 lbs.  
 Weight of unit 80 kg - 176 lbs.  
 Total weight 110 kg - 242 lbs.

Section W-W



Sanitary Installation	
B Cold Water	MEIKO R 1/2" NPT, Stop-cocks, 1/4" Strainer
C Hot water	MEIKO R 1/2" NPT, Stop-cocks, 1/4" Strainer
D Low pressure steam	MEIKO R 1/2" NPT, Stop-cocks, DN-T collector
E Waste Ductlet	MEIKO 3" P Trap
F Vent	MEIKO 2" Vent Connection
In the building	
A 3 PH ~ 208/230V, 60Hz, 0.8KV	Cable from top edge basic frame about 5' from fuse.
Electrical Installation	Protection of cable protective measures as well as covered out according to IEC 384-5-54 and conform to the local and national power utilities regulations.
Installation Category II, Main switch.	Installation Category II, Main switch.
Connection dimensions are subject to tolerances. It is neither allowed to give the drawing without our permission to a third party for information or reproduction nor may it be used for competition purposes. All rights are reserved. Subject to technical changes.	
<b>MEIKO USA INC.</b> 1349 Hill Ducker Blvd LA Vergne TN 37086 UNITED STATES OF AMERICA TEL: (615)399-6600 FAX: (615)399-6600	
Reference	Alter: Drawn: Checked:
Type	TP LINE 30WC DT-NDD LH ADA
Proj. no.	Thermal disinfection/External Steam Supply
Drawing no.	
Index	
Scale: 1:20	Drawn: pm
Date: May102011	Checked: dbb
Date: May102011	